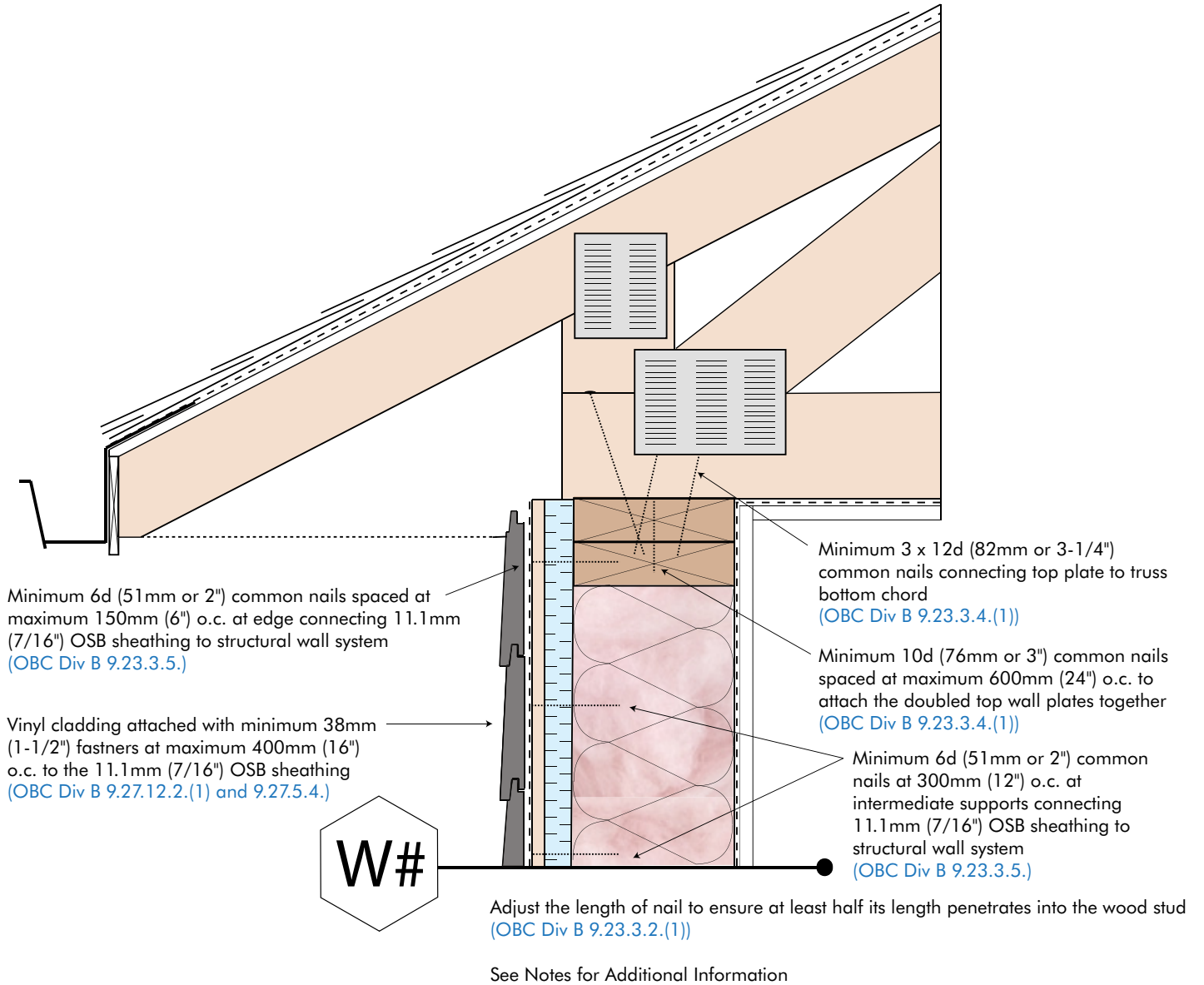
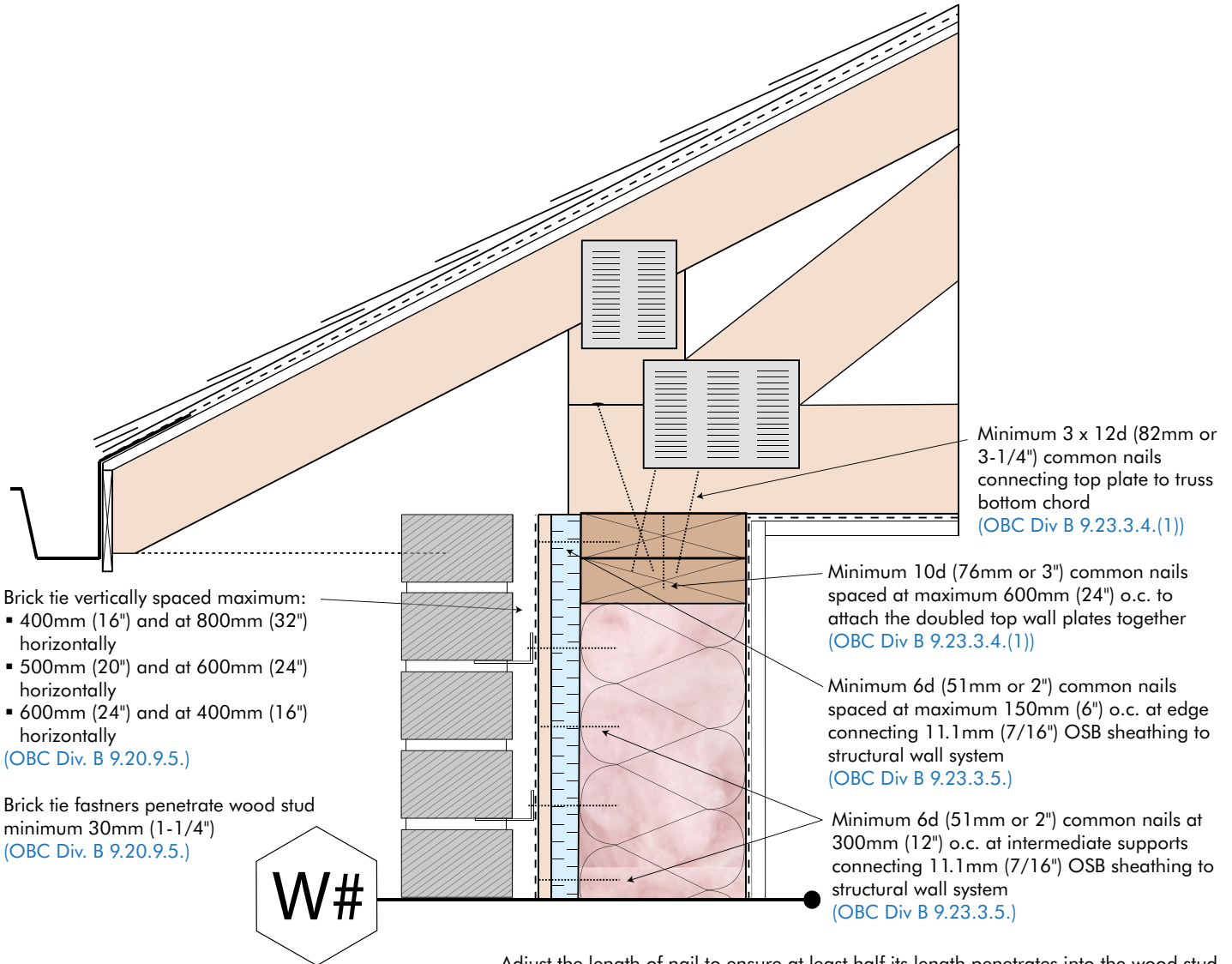


VINYL ROOF DETAIL



BRICK ROOF DETAIL

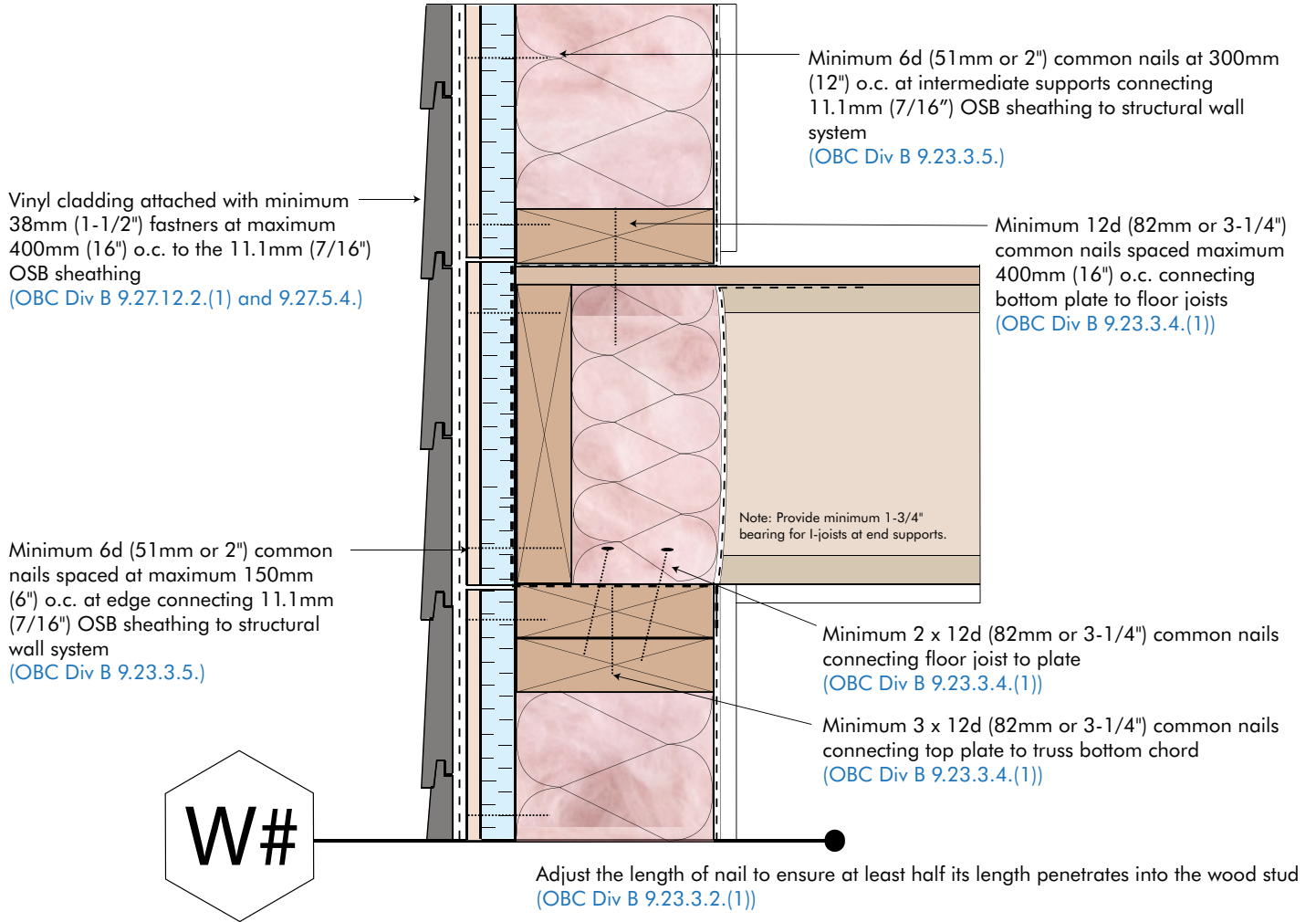


Adjust the length of nail to ensure at least half its length penetrates into the wood stud

(OBC Div B 9.23.3.2.(1))

See Notes for Additional Information

VINYL FLOOR DETAIL



See Notes for Additional Information

BRICK FLOOR DETAIL

Brick tie vertically spaced maximum:

- 400mm (16") and at 800mm (32") horizontally
- 500mm (20") and at 600mm (24") horizontally
- 600mm (24") and at 400mm (16") horizontally

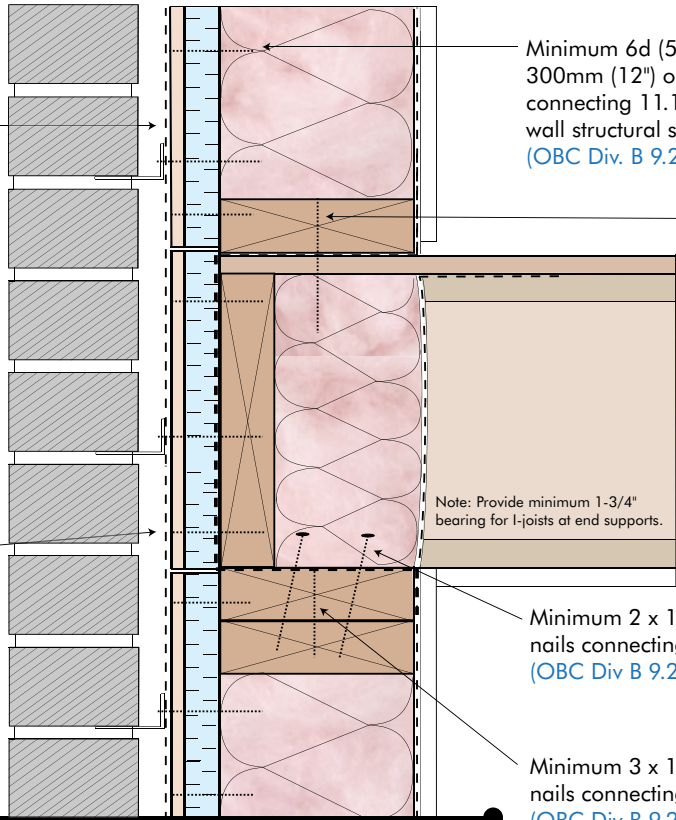
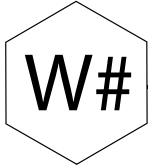
(OBC Div. B 9.20.9.5.)

Brick tie fasteners penetrate wood stud minimum 30mm (1-1/4")

(OBC Div. B 9.20.9.5.)

Minimum 6d (51mm or 2") common nails spaced at maximum 150mm (6") o.c. at edge connecting 11.1mm (7/16") OSB sheathing to structure

(OBC Div B 9.23.3.5.)



Minimum 6d (51mm or 2") common nails at 300mm (12") o.c. at intermediate supports connecting 11.1mm (7/16") OSB sheathing to wall structural system

(OBC Div. B 9.23.3.5.)

Minimum 12d (82mm or 3-1/4") common nails spaced maximum 400mm (16") o.c. connecting bottom plate to floor joists

(OBC Div B 9.23.3.4.(1))

Note: Provide minimum 1-3/4" bearing for I-joists at end supports.

Minimum 2 x 12d (82mm or 3-1/4") common nails connecting floor joist to plate

(OBC Div B 9.23.3.4.(1))

Minimum 3 x 12d (82mm or 3-1/4") common nails connecting top plate to truss bottom chord

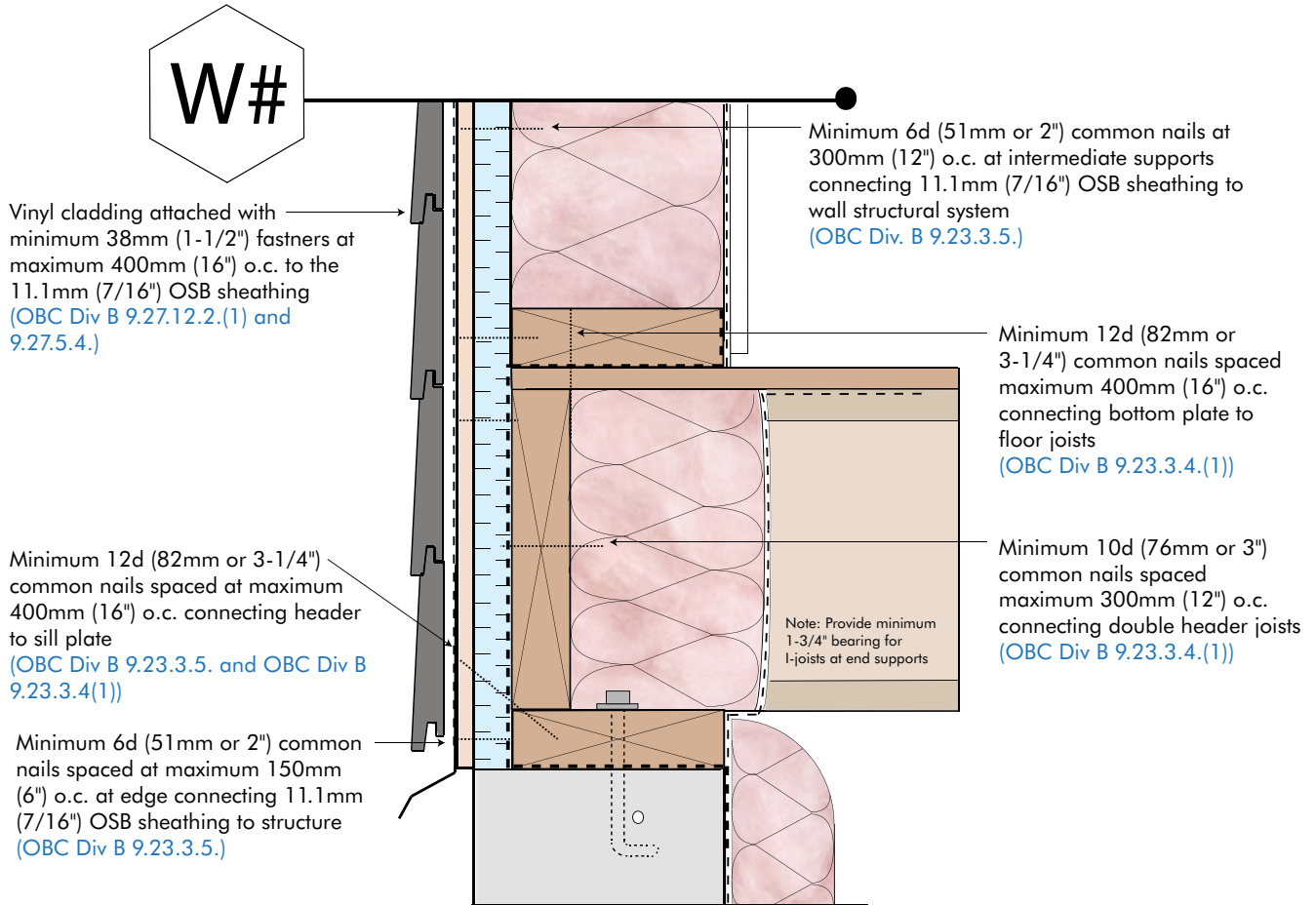
(OBC Div B 9.23.3.4.(1))

Adjust the length of nail to ensure at least half its length penetrates into the wood stud

(OBC Div B 9.23.3.2.(1))

See Notes for Additional Information

VINYL FOUNDATION DETAIL

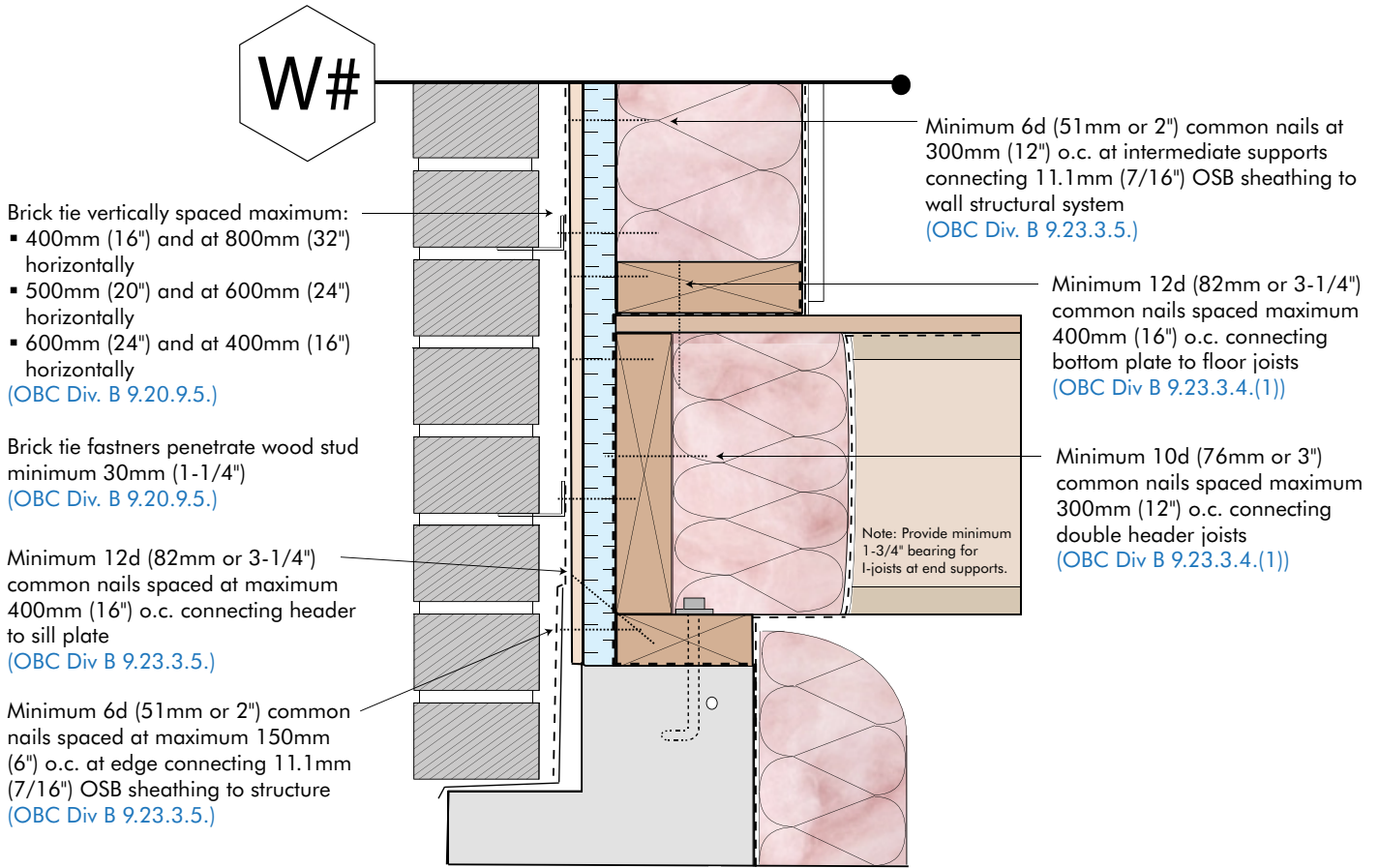


Note: Provide proper gap between wood structural panel and concrete as per local code requirements and manufacturer recommendations.

Adjust the length of nail to ensure at least half its length penetrates into the wood stud (OBC Div B 9.23.3.2.(1))

See Notes for Additional Information

BRICK FOUNDATION DETAIL



Note: Provide proper gap between wood structural panel and concrete as per local code requirements and manufacturer recommendations.

Adjust the length of nail to ensure at least half its length penetrates into the wood stud

(OBC Div B 9.23.3.2.(1))

See Notes for Additional Information